



Standard Online IRESS ViewPoint Charting

November 2016

© IRESS

All information contained in this document is to be treated as confidential and should not be disclosed to any other party without the approval of IRESS.

Table of Contents

Introduction	3
Using this guide	3
1.0 Accessing chart widget	4
1.1 From a blank widget space	4
1.2 Add widget from the widget menu	4
2.0 Navigating charting	5
2.1 Chart overlay	5
2.2 Compare - % price calculation	6
2.3 AutoSave	7
2.4 Save	7
2.5 Load a saved chart	8
2.6 Show / Hide	8
2.7 Format chart	9
2.8 Relevancy	9
3.0 Widget layout	10
4.0 Display options	12
5.0 Create a new chart	12
5.1 Searching for a security code	13
6.0 Chart navigation tools	15
7.0 Chart drawing tools	15
7.1 Add a drawing tool to the chart	15
7.2 Delete a drawing tool to the chart	16
7.3 Hide all drawing tools	17
7.4 Delete all drawing tools	17
8.0 Indicators	17
8.1 Add an indicator to the chart	18
8.2 Show or hide an indicator	19
8.3 Delete an indicator	20

Introduction






Standard Online Iress ViewPoint is an intuitive, easy-to-use market data and trading platform built on HTML5 technology.

It offers a highly customisable user interface, a comprehensive library of widgets, and the ability to log in via the latest versions of all major web browsers with no dependencies on 3rd party plug-ins.

The purpose of this document is to provide a basic introduction to the charting widget. For more detailed information on the charting widget or any other widget, access the Help Centre.

Using this guide

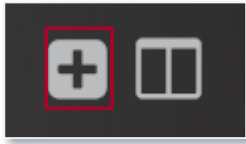
This guide is structured to be as easy to follow as possible. To help you navigate through this guide, a number of symbols are used to help identify key points or sections.

Icons	Description
	Important - prioritise these sections
	Extra Information - background details
	Useful hints or tips
	Points to an important menu item
	Highlights column headings for ease of reference

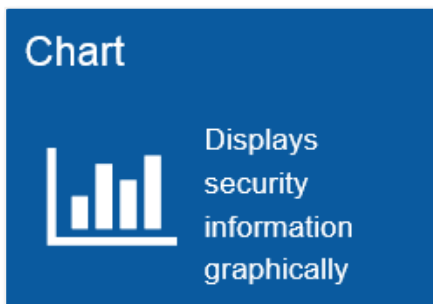
1. Accessing charting widget

1.1 From a blank widget space

1. In a new worksheet, click the **Add a widget** button.
2. Click the **+** button.



3. Select the **Chart** widget.



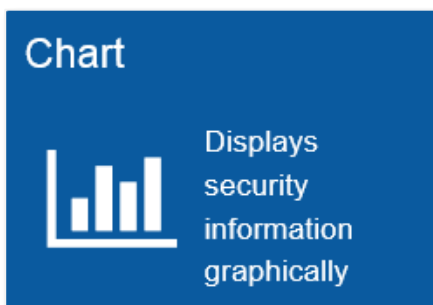
4. Select **OK**.

1.2 Add widget from the widget menu

1. Click the **Widget** menu.
2. Click the **+** button.



3. Select the **Chart** widget.

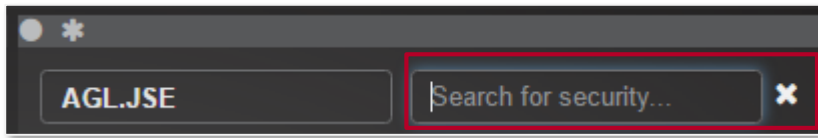


4. Select **OK**.

2. Navigating charting

2.1 Chart Overlay

1. Create a new chart i.e. **AGL** with time frame **one month**.
2. Click **Add**.



3. Enter in relevant security i.e. type in **SOL.JSE**.
4. Click **Enter**.
5. SOL.JSE chart will appear on its own axis at the bottom of the chart widget.

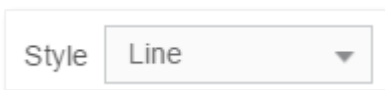


6. Select **SOL.JSE** chart then **drag and drop** the chart on the top of the **AGL.JSE** chart to overlay with AGL.JSE.



To change the chart type:

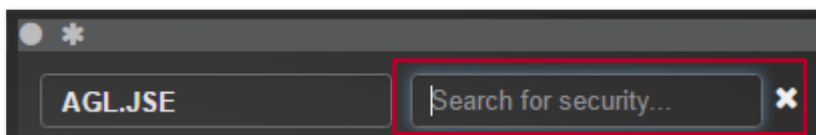
1. Double click on any of the charts. Chart settings dialog box displays.
2. Use the drop down menu to change the style to line.



3. Select **OK**.
4. Repeat until both chart styles display lines.

2.2 Compare - % price calculation

1. Create a new chart i.e. **AGL** with time frame **one month**.
2. Click **Compare**.



3. Enter in relevant security i.e. type in **SOL.JSE**.
4. Click **Enter**.

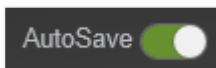


The chart's y-axis changes to a **% Change** calculation based on the previous closing price at the beginning of the chart.

As the chart's x-axis timeframe is moved, the **% Change** will recalculate every time.

2.3 Auto Save

1. **AutoSave On**, indicated in green saves chart settings and drawings automatically.



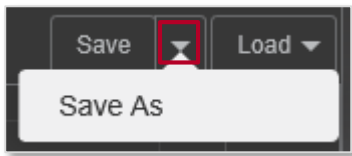
2. **AutoSave Off**, indicated in grey will not save the chart setting automatically. It allows manual saving.



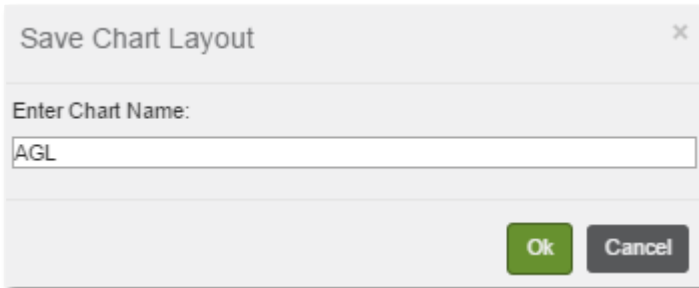
2.4 Save

Save a chart with a new name

1. Click the down arrow next to the Save button in the upper right-hand corner of the widget and select **Save As**. The **Save Chart Layout** dialog box opens.



2. In the **Enter Chart Name** box, type a name for the new chart i.e. **AGL**.



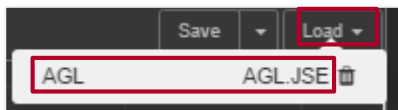
3. Click **OK**.

Save an existing chart with the same name

1. Simply click the **Save** button in the upper right –hand corner of the widget.

2.5 Load a saved chart

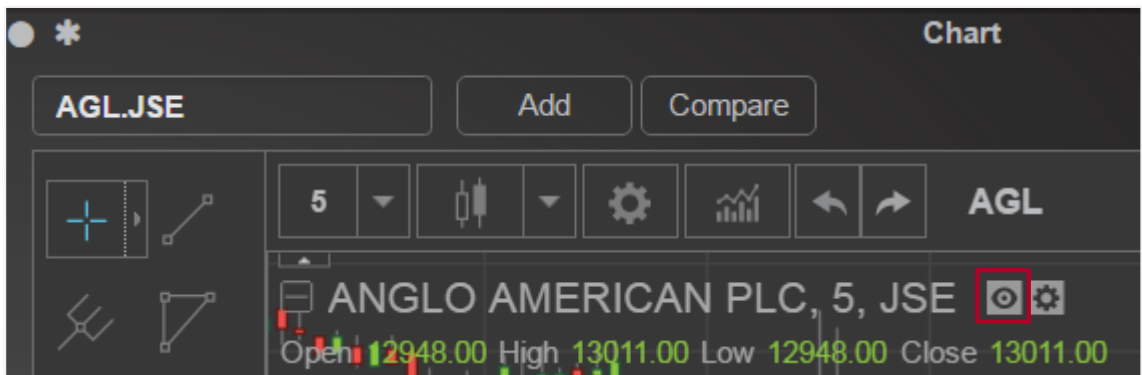
1. Click the Load button in the upper right hand corner of the widget. A drop down list displays previously saved charts.



2. Select relevant chart i.e. **AGL**.

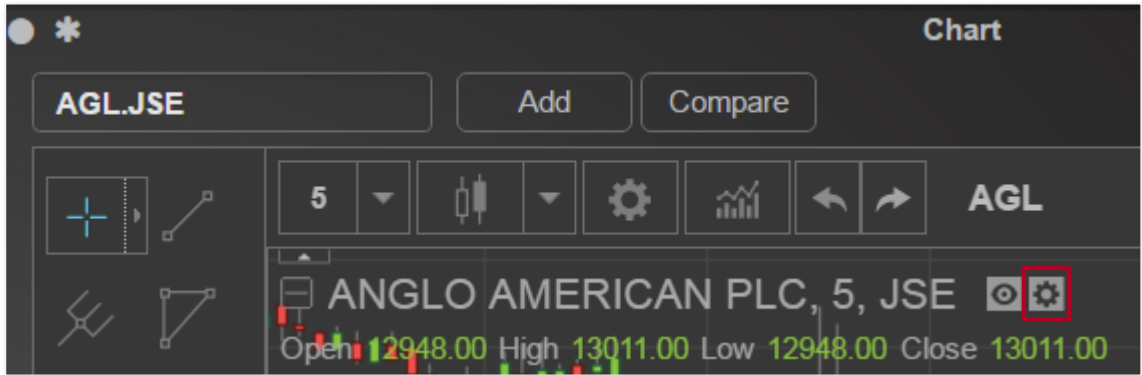
2.6 Show / Hide

1. Click **Show / Hide** next to the name of the security to show or hide the security data on the chart.



2.7 Format Chart

1. Click **Format Chart** next to the name of the security to open **Chart Properties**.



2.8 Relevancy

1. Click **Relevancy** to view whether there is a position or orders on the particular security.



3. Widget layout

The Chart widget is comprised of three sections:

- **Display Options (top)**

The **Display Options** section consists of buttons that change the time interval, chart style, chart properties and indicators that overlay the chart.

This section also contains **Undo** and **Redo** buttons.

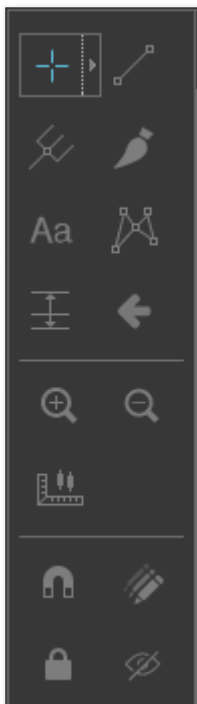


If the Display Option section is not showing, click the chart top arrow (top left of the chart widget).



- **Drawing Tools (left)**

The Drawing Tools section consists of buttons that let you add specific drawing tools to your chart.





If the Display Option section is not showing, click the chart left arrow (top left of the main area of the Chart widget).




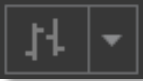






- **Chart (main area)**

The main area of the Chart widget comprises the actual chart and any indicators that have been added.



4. Display options

Icon	Function
	Modify the time interval for the chart: <ul style="list-style-type: none"> • 1 minute, 30 minutes, 1 hour, 3 months
	Click to select from a pre-defined list of intervals
	Click to type in a specific time interval.
	Select the chart style: <ul style="list-style-type: none"> • Bars • Candles • Hollow candles • Lines • Area • Heiken ashi
	Modify chart properties to change the chart style, scales and background colours.
	Add an indicator to the chart.
	Undo the last change.
	Redo the last change.

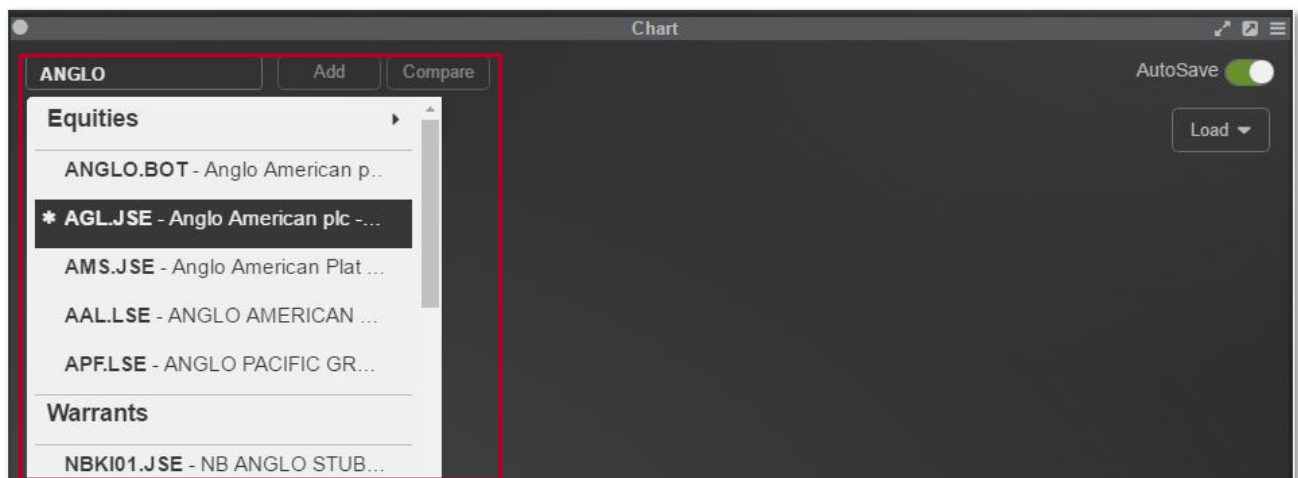
5. Create a new chart

1. Open the Chart widget.
2. In the Code box, type or select a security code.
3. Use the display options to customise the chart as needed.
4. Add drawing tools as needed.
5. Add indicators as needed.

5.1. Searching for a security code

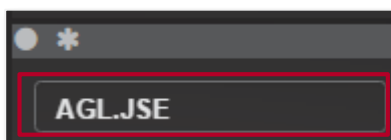
Search using security name

1. Type in the security name i.e. **Anglo** into the **Search for security** search box.
2. Click **Enter**.
3. Select the relevant security i.e. **AGL.JSE**



Search using security code

1. Type in the security code i.e. **AGL.JSE** into the **Search for security** search box.
2. Click **Enter**.



6. Chart navigation tools

Use the row of navigation tools at the bottom of the widget to navigate the cart.

- Click the **left** and **right** arrows to scroll to the left or right, viewing data chronologically.
- Click to **-** or **+** buttons to zoom out or in, respectively.
- Click the **round arrow icon** in the middle to scroll back to the current date and time.



7. Chart drawing tools

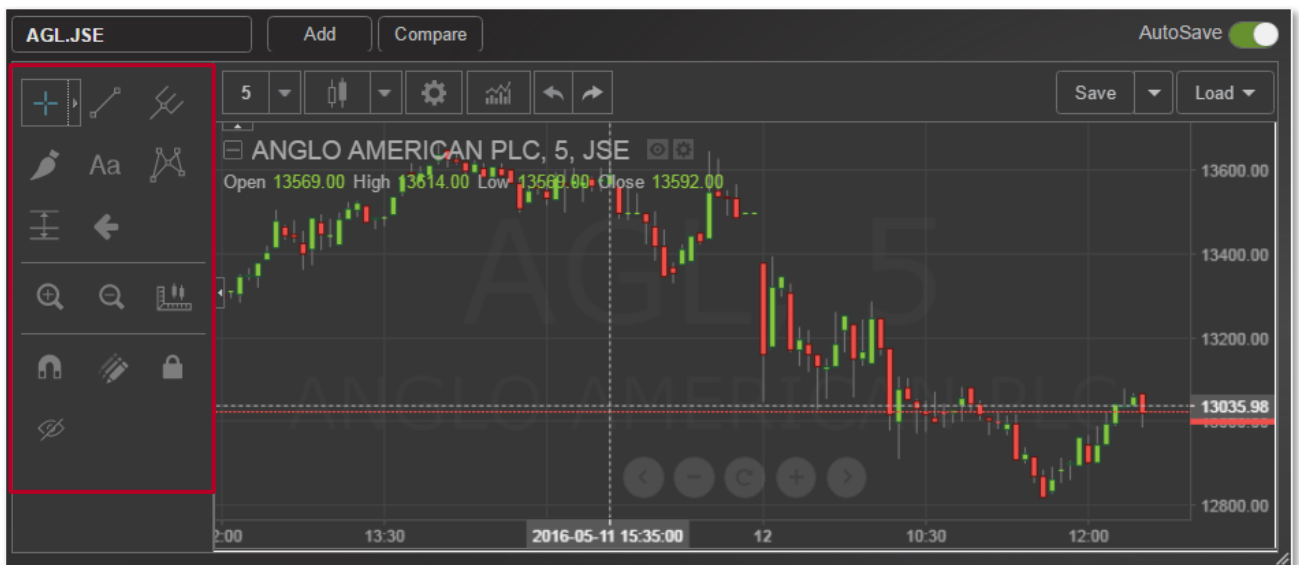
Use any of the drawing tools to help analyse the charts or call attention to a specific chart feature.

7.1 Add a drawing tool to the chart

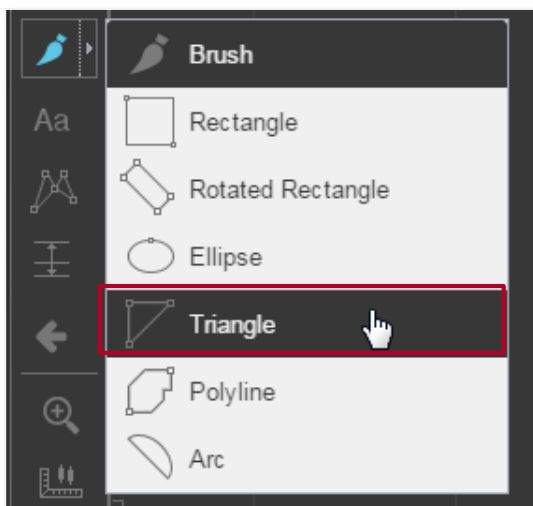
1. In the Drawing Tools section, select the button for the drawing tool category.



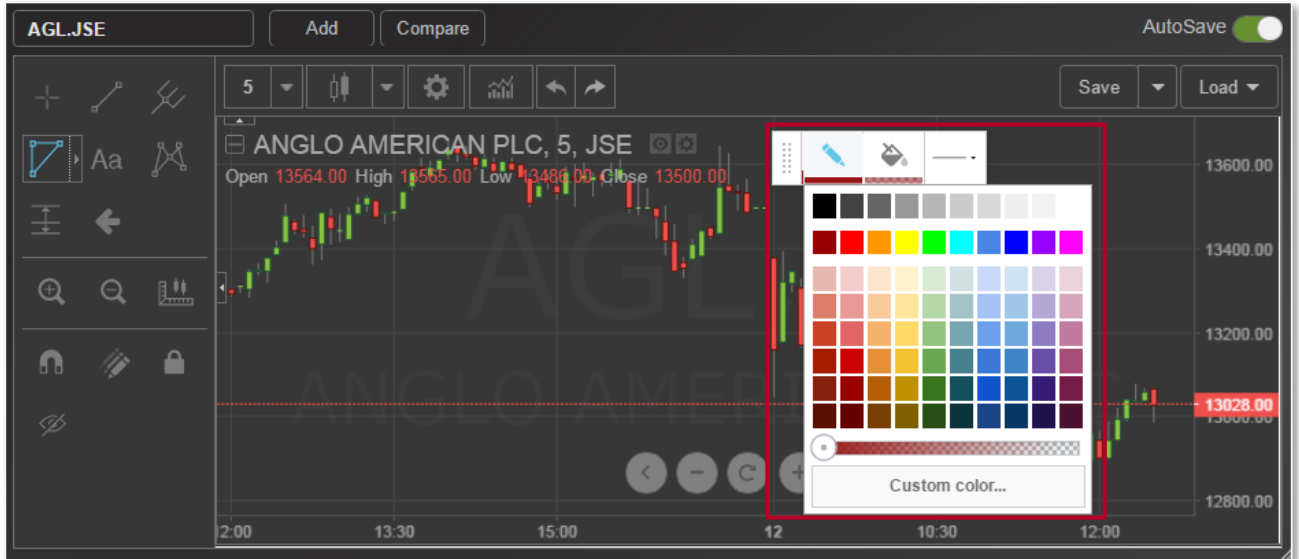
2. The available drawing tools will display.



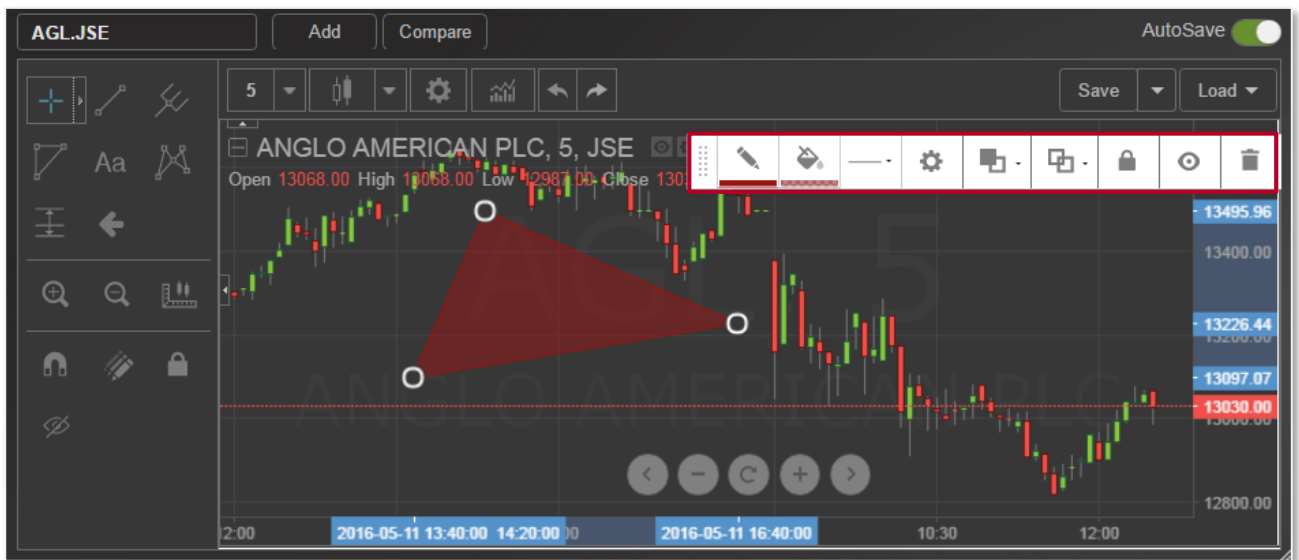
3. Select the button for the relevant drawing tool i.e. **Triangle**.



4. Customise the drawing tool as needed by using the dialog bar that automatically displays when a drawing tool is added.



5. Click and drag the cursor as needed to create the drawing tool on the chart.



7.2 Delete a drawing tool to the chart

1. Click on the drawing that you want to delete. In the dialog bar that appears, click **Remove** or press the Delete button on your keyboard.



7.3 Hide all drawing tools

Hide all drawing tools in the chart without deleting them.

- In the Drawing tools section, click **Hide All Drawing Tools**. Click again to return drawing tools.

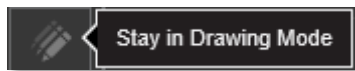


7.4 Delete all drawing tools.

- In the Drawing tools section, click **Remove All Drawing Tools icon**.



To use the drawing tool multiple times, select the option **Stay in Drawing Mode icon**.



Drawing tools can be saved per instrument by saving and then uploading the saved charts.

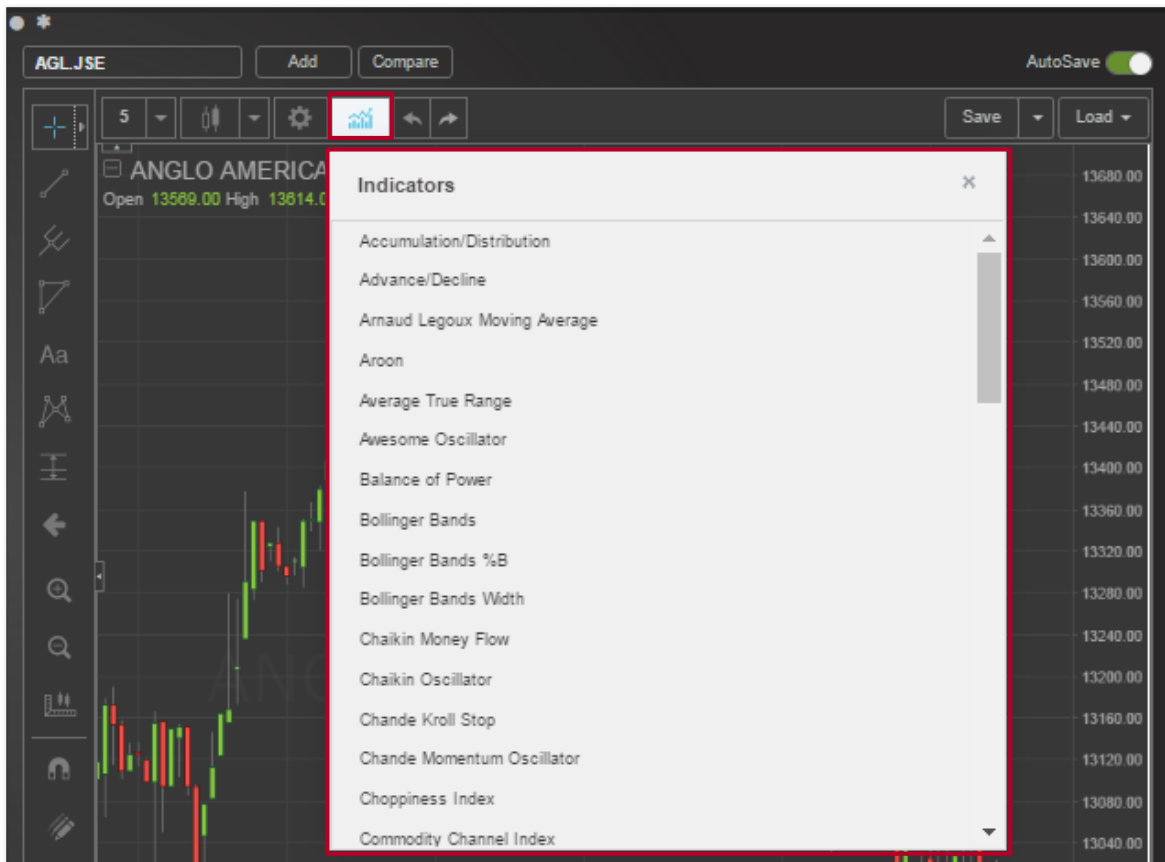
8. Indicators

8.1 Add an indicator to the chart

1. In the **Display Options** section, click **Indicators** icon.



2. Select the indicator from the drop down menu to add to the chart.



8.2 Show or hide an indicator

- Click **Show / Hide** next to the name of the indicator to show or hide. Click it again to undo.



8.3 Delete an indicator

- Click Delete next to the name of the indicator for removal.

